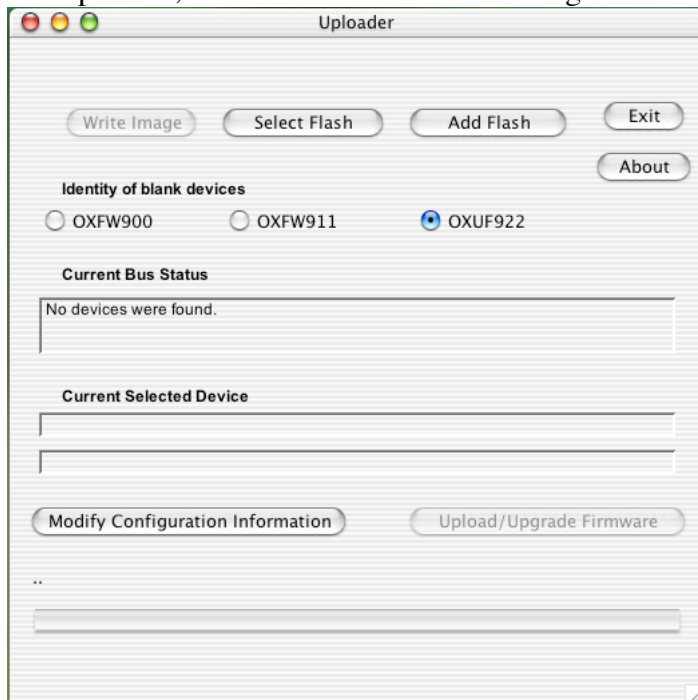
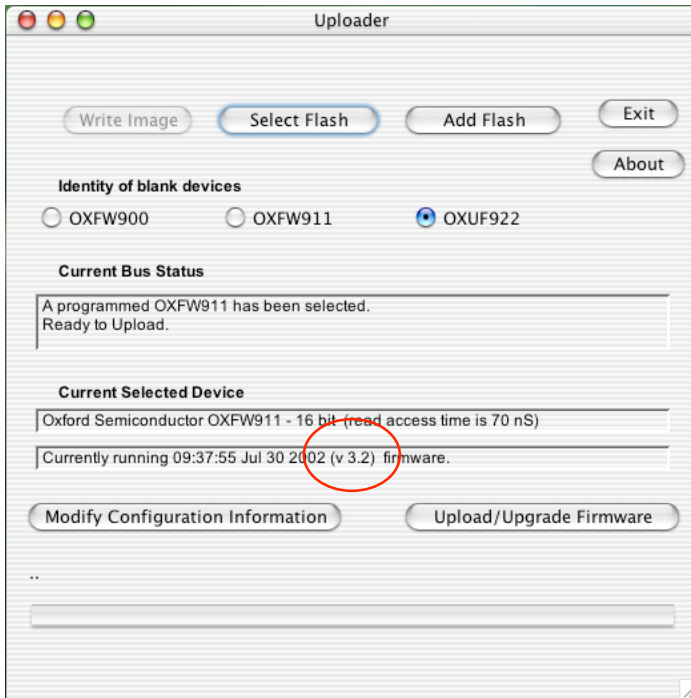


1. Download “WinJavaUploader_v1_40.msi”. If your computer runs Windows 95/98/ME, please visit <http://support.microsoft.com/default.aspx?scid=kb%3Ben-us%3B305496> for information on running .msi file. Run the “WinJavaUploader_v1_40.msi” to start the installation. Install the utility into a known location. The default location is c:\Program Files\Win_Java_uploader\.
2. Open the folder where the utility is installed. You should be able to see the utility, “uploadergui.jar”. If it is not executable, please visit <http://java.sun.com/j2se/1.4.1/jre/install-windows.html> and download and install Java.
3. Double click on “uploadergui.jar”. You should have the firmware utility, called Uploader, which looks like the following.



4. Turn on the FireWire enclosure and then plug it into the computer. The “Uploader” should be able to detect the bridge and display the current version of firmware as indicated by the red circle.



5. Download “fw20030722.zip”, the latest firmware version 3.8, and unzip it to a known location. You should obtain “fw20030722.bin”.
6. On the “Uploader”, click on “Upload/Upgrade Firmware” button and navigate to where you have unzipped firmware version 3.8. When you have chosen “fw20030722.bin”, the Uploader will start updating your Oxford 911 bridge to run firmware version 3.8.
7. Click on the “Exit” button to quit the Uploader.